



MONTHLY MEMBERSHIP PROGRESS REPORT

District 26 M2

Results as of: 3/31/2014

GMT: HAL GRIFFIN

LOCATION MISSOURI

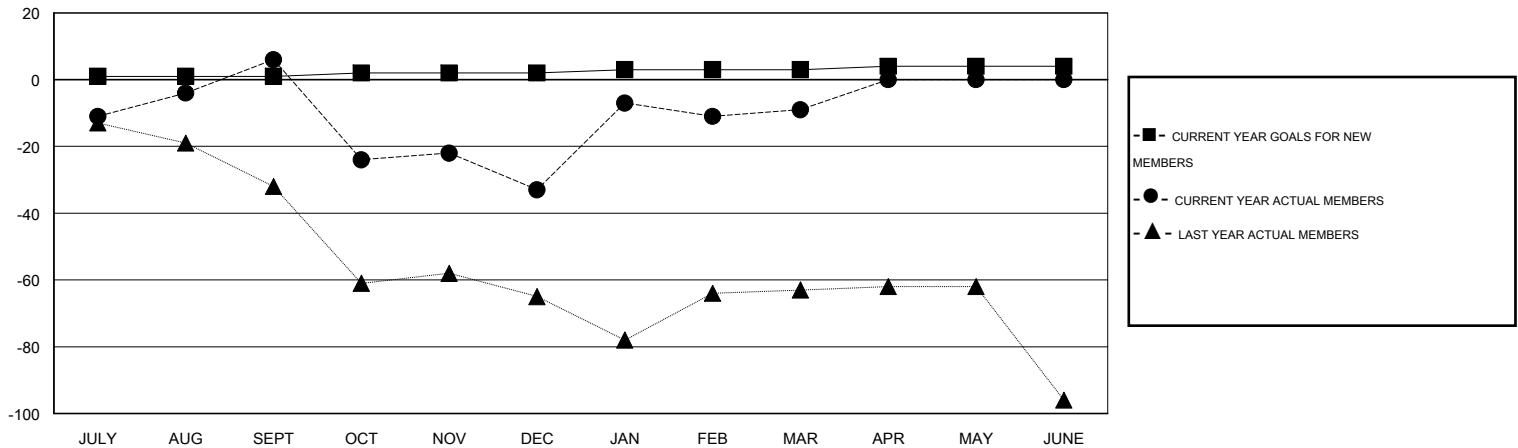
GMT CA 1

Clubs					Members				
RESULTS FOR 2013-2014					RESULTS FOR 2013-2014				
QUARTER	NEW CLUB GOAL	ACTUAL NEW CLUBS	ACTUAL DROPPED CLUBS	ACTUAL NET GAIN/LOSS	QUARTER	NEW MEMBER GOAL	ACTUAL TOTAL MEMBERS ADDED	ACTUAL DROPPED MEMBERS	ACTUAL NET GAIN/LOSS
JULY/AUG/SEPT	0	0	0	0	JULY/AUG/SEPT	1	35	29	6
OCT/NOV/DEC	0	0	0	0	OCT/NOV/DEC	1	33	72	-39
JAN/FEB/MAR	0	0	0	0	JAN/FEB/MAR	1	64	40	24
APR/MAY/JUNE	0	0	0	0	APR/MAY/JUNE	1	0	0	0

GOALS AND ACTUAL NEW CLUBS CUMULATIVE



GOALS AND ACTUAL MEMBERS CUMULATIVE



DROPPED CLUBS: 0	27 CLUBS OF 46 ADDED 1 OR MORE NEW MEMBERS	GENDER DISTRIBUTION
		MALE 1,143 (74.32%)
		FEMALE 395 (25.68%)
DROPPED MEMBERS	CLICK HERE FOR HEALTH ASSESSMENT DATA	FAMILY UNIT MEMBERS 285
DECEASED 10		HEAD OF HOUSEHOLD 138
CLUB CANCELLED 0		NON-HEAD OF HOUSEHOLD 147
OTHER 131		
TOTAL 141		